

TIIG
INJURY SURVEILLANCE IN THE NORTH WEST OF ENGLAND

ROYAL ALBERT EDWARD INFIRMARY EMERGENCY DEPARTMENT

MONTHLY BULLETIN: OCTOBER 2013 TO SEPTEMBER 2014

This bulletin provides a breakdown of all injury attendances to Royal Albert Edward Infirmary Emergency Department (ED) between October 2013 and September 2014.

During this twelve month period there were 32,121 injury attendances to the ED. The month with the highest number of attendances, calculated as a daily average, was June 2014 (102 per day) with January 2014 having the lowest attendances (74 per day; **Figure 1**).

Males accounted for over half (55%) of all attendances (**Figure 1**). The highest proportions of attendances were for persons aged between five and 19 years (27%) and between 20 and 34 years (23%; **Figure 2**).

The majority (92%) of attendances were recorded as other injury. Assaults and road traffic collisions (RTCs) each accounted for 3% of attendances, while 2% were sustained by deliberate self-harm (DSH; **Table 1**). Over a third (36%) of DSH attendees were aged between 20 and 34 years (**Figure 3**).

Table 2 shows the incident location of injury attendances. Forty-six per cent of injuries occurred in the home, 8% occurred at work, 8% in a public place and 6% at an educational establishment.

Table 3 shows the ethnicity of injury attendees to Royal Albert Edward Infirmary ED. The majority (97%) of attendees were recorded as White.

The disposal of a patient can give an indication of the severity of the injuries sustained. Over half (52%) were discharged with no follow-up treatment required, four in ten (40%) were referred for further treatment and 7% were admitted to hospital (**Table 4**). Eight in ten (80%) RTC attendees and just over half (51%) of assault attendees were discharged from hospital, while just under half (49%) of presentations for DSH were admitted to hospital (**Table 5**).

Table 6 shows the arrival method of injury attendances to Royal Albert Edward Infirmary ED. Around one in seven (15%) arrived by ambulance.

Assault attendances

Between October 2013 and September 2014 there were 1,073 assault-related injury attendances to Royal Albert Edward Infirmary ED.

Almost seven in ten (68%) were male and over half (51%) were aged between 20 and 34 years. A third (33%) of assaults occurred in a public place (**Table 7**).

Figure 1: ED injury attendances by gender and month, October 2013 to September 2014

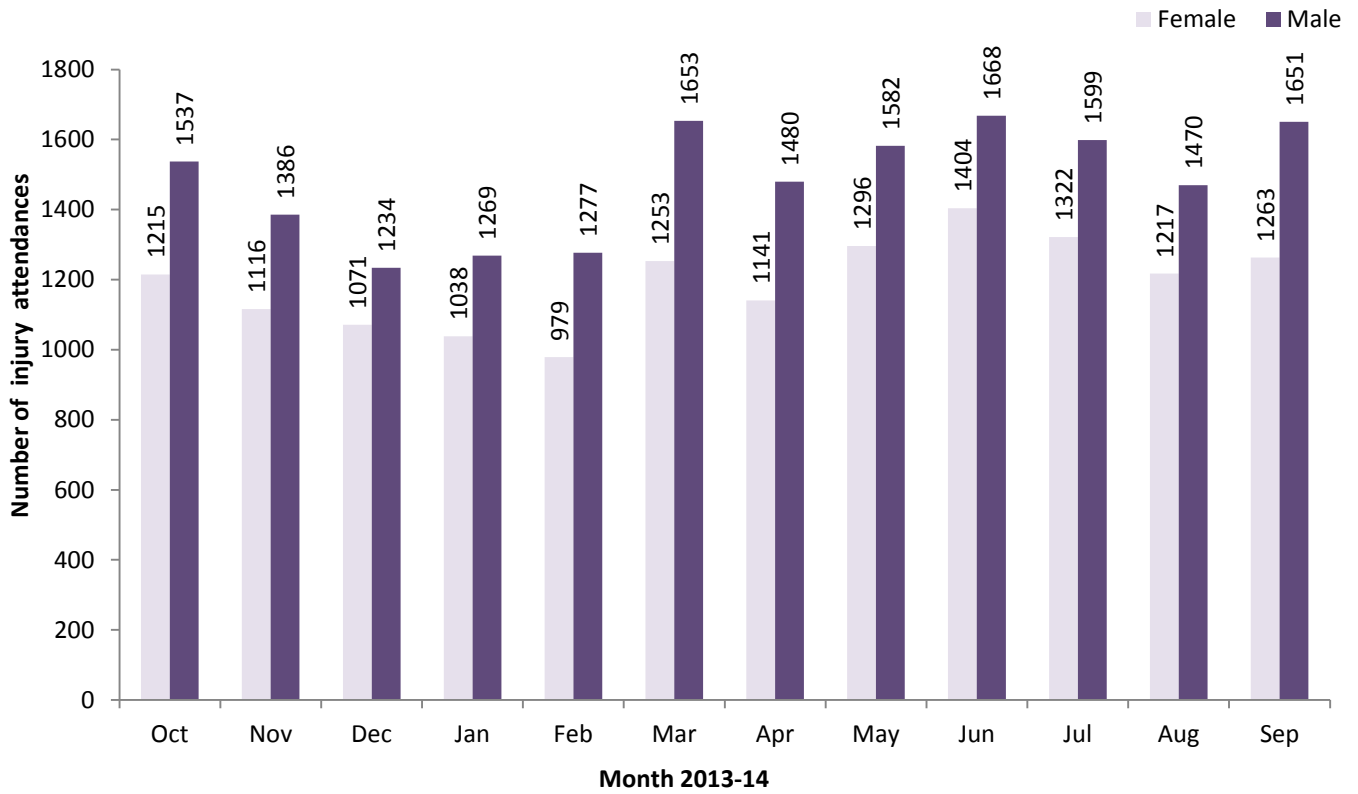


Figure 2: ED injury attendances by age group and month, October 2013 to September 2014

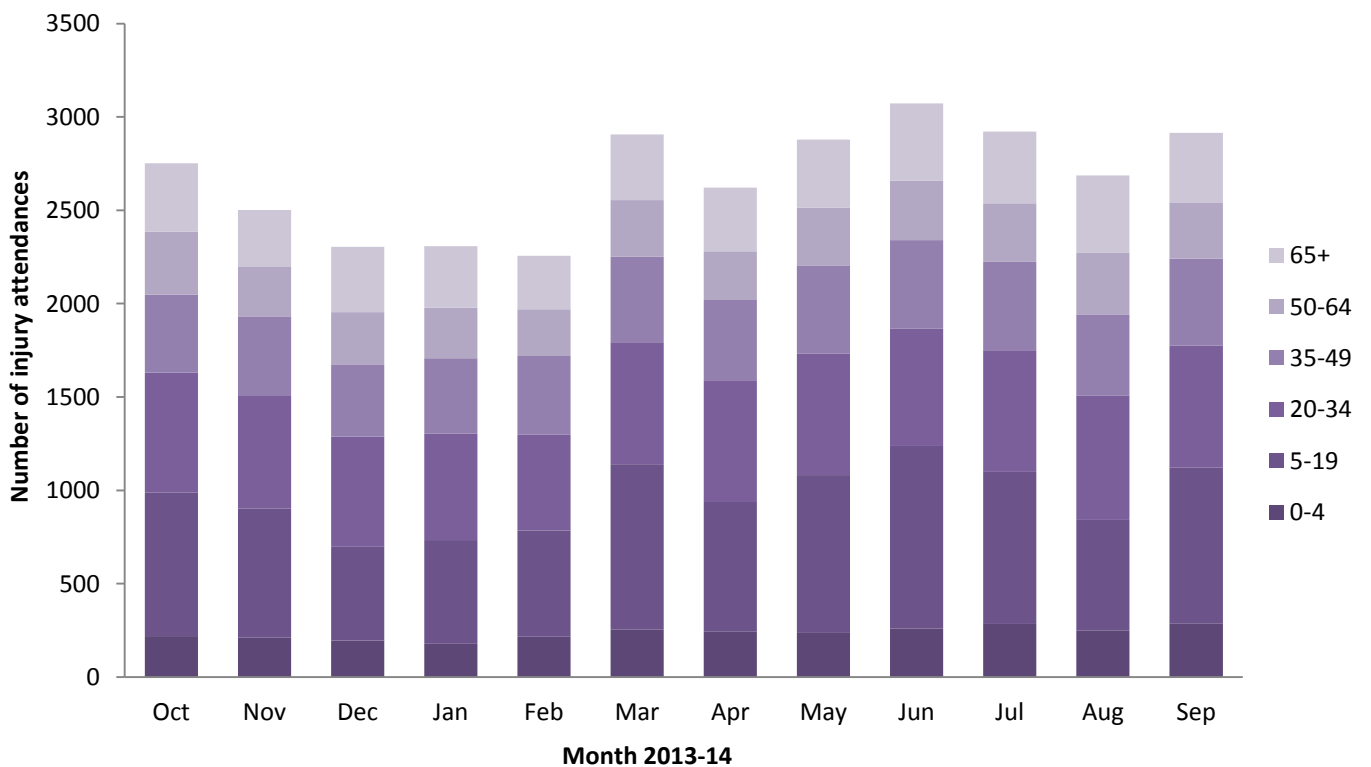


Table 1: ED injury attendances by injury group and month, October 2013 to September 2014

Injury group	Oct	Nov	Dec	Jan	Feb	Mar	Apr	May	Jun	Jul	Aug	Sep	Total	%
Other accident	2502	2247	2060	2084	2067	2712	2438	2652	2895	2728	2512	2695	29592	92
Assault	115	86	123	93	92	82	88	75	79	73	85	82	1073	3
RTC	80	113	66	68	51	60	56	94	59	90	48	77	862	3
DSH	55	56	56	62	46	52	39	57	39	30	42	60	594	2
Total	2752	2502	2305	2307	2256	2906	2621	2878	3072	2921	2687	2914	32121	100

Figure 3: ED injury attendances by age group and injury group (excluding other injury), October 2013 to September 2014

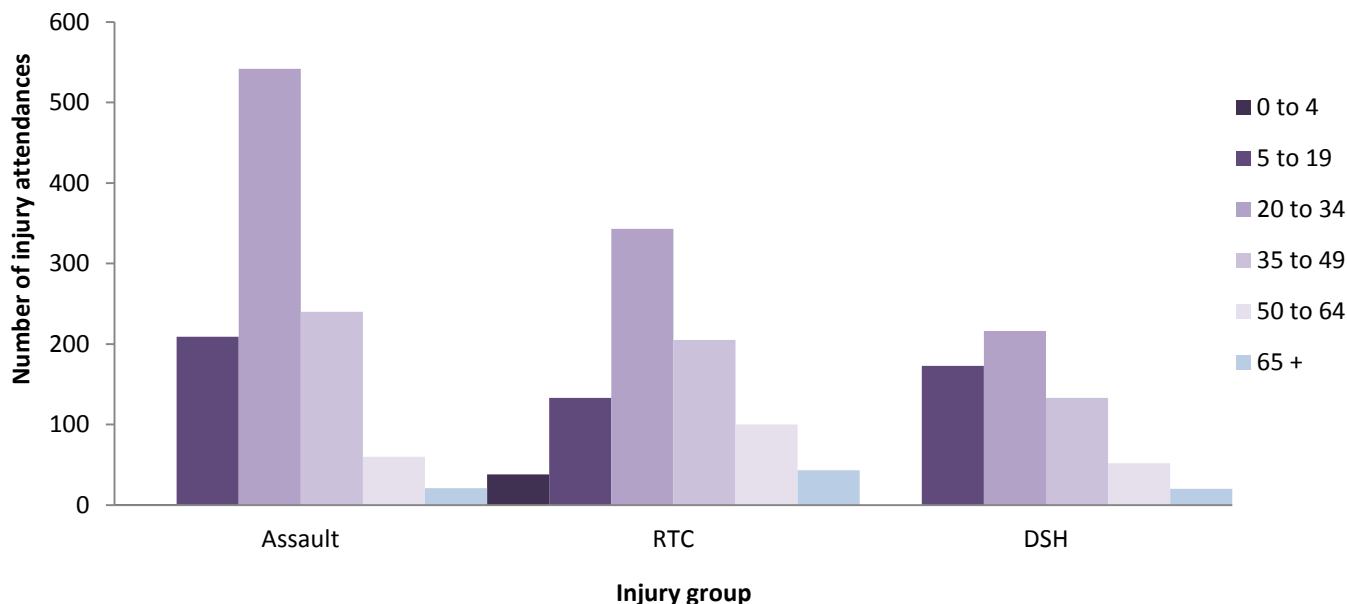


Table 2: ED injury attendances by incident location and month, October 2013 to September 2014

Incident location	Oct	Nov	Dec	Jan	Feb	Mar	Apr	May	Jun	Jul	Aug	Sep	Total	%
Home	1191	1100	1129	1083	1037	1285	1241	1322	1396	1402	1386	1356	14928	46
Other	855	747	589	693	681	976	880	983	1004	987	864	930	10189	32
Work	277	245	198	235	216	224	201	215	214	206	227	238	2696	8
Public place	222	208	247	158	174	200	194	209	211	198	203	200	2424	8
Educational establishment	207	202	142	138	148	221	105	149	247	128	7	190	1884	6
Total	2752	2502	2305	2307	2256	2906	2621	2878	3072	2921	2687	2914	32121	100

Table 3: ED injury attendances by ethnicity and month, October 2013 to September 2014^{1,2}

Ethnicity	Oct	Nov	Dec	Jan	Feb	Mar	Apr	May	Jun	Jul	Aug	Sep	Total	%
White	2682	2417	2246	2238	2196	2809	2539	2790	2961	2830	2598	2818	31124	97
Not recorded	27	31	16	27	25	29	28	28	35	30	22	33	331	1
Not stated	17	13	17	16	14	35	19	17	30	22	27	19	246	1
Mixed	5	12	7	12	9	12	16	13	12	14	13	19	144	0
Black	10	15	<10	6	***	10	8	14	17	12	11	13	123	0
Indian	***	***	6	***	***	***	***	***	***	***	5	***	37	0
Asian other	***	***	***	***	***	***	***	***	6	***	***	***	36	0
Chinese	***	***	***	***	5	***	***	***	***	***	***	***	36	0
Pakistani	***	***	***	***	***	***	***	***	***	***	***	***	27	0
Any other ethnic group	0	***	***	***	0	0	***	***	***	***	***	0	<20	0
Bangladeshi	0	0	0	0	0	0	0	0	0	***	0	0	***	0
Total	2752	2502	2305	2307	2256	2906	2621	2878	3072	2921	2687	2914	32121	100

Table 4: ED injury attendances by method of disposal and month, October 2013 to September 2014³

Disposal method	Oct	Nov	Dec	Jan	Feb	Mar	Apr	May	Jun	Jul	Aug	Sep	Total	%
Discharged	1497	1381	1197	1237	1086	1360	1400	1577	1569	1491	1355	1519	16669	52
Referral/follow-up	1025	944	943	897	881	1148	1024	1079	1287	1237	1074	1169	12708	40
Admitted	222	171	159	164	106	202	184	211	203	181	244	211	2258	7
Other	8	6	6	9	183	196	13	11	13	12	14	15	486	2
Total	2752	2502	2305	2307	2256	2906	2621	2878	3072	2921	2687	2914	32121	100

Table 5: ED injury attendances by method of disposal and injury group, October 2013 to September 2014³

Disposal method	Assault		DSH		Other injury		RTC		Total	
	n	%	n	%	n	%	n	%	n	%
Discharged	549	51	136	23	15297	52	687	80	16669	52
Referral/follow-up	426	40	155	26	11982	40	145	17	12708	40
Admitted	81	8	289	49	1866	6	22	3	2258	7
Other	17	2	14	2	447	2	8	1	486	2
Total	1073	100	594	100	29592	100	862	100	32121	100

Table 6: ED injury attendances by arrival mode and month, October 2013 to September 2014

Arrival mode	Oct	Nov	Dec	Jan	Feb	Mar	Apr	May	Jun	Jul	Aug	Sep	Total	%
Other	2323	2113	1906	1872	1914	2528	2237	2491	2680	2518	2211	2476	27269	85
Brought in by ambulance	429	389	399	435	342	378	384	387	392	403	476	438	4852	15
Total	2752	2502	2305	2307	2256	2906	2621	2878	3072	2921	2687	2914	32121	100

¹ Please note that for all tables, all numbers less than five have been suppressed (with ***) in line with patient confidentiality. If there is only one number less than five in a category then two numbers will be suppressed to prevent back calculation from totals.

² White = Irish, British, other White background; Mixed = White and Black, White and Asian, mixed - any other; Black = African, Caribbean, other black.

³ Admitted = admitted to hospital bed; Discharged = discharged - did not require any follow-up treatment; Referral/follow-up=discharged - follow-up treatment to be provided by GP, referred to ED clinic, referred to fracture clinic, referred to other out-patient clinic, transferred to other health care provider; Other = died in department, left department before being treated, left department having refused treatment.

ASSAULTS

Table 7: ED assault attendances by gender, mode of arrival, incident location and age group, October 2013 to September 2014¹

	Assault attendances (n=1,073)		All injury attendances (n=32,121)
Gender	n	%	%
Male	730	68	55
Female	343	32	45
Incident location	n	%	%
Home	293	27	46
Other	326	30	32
Public place	356	33	8
Work	70	7	8
Educational establishment	28	3	6
Age group	n	%	%
0 to 4	***	0	9
5 to 19	209	19	27
20 to 34	542	51	23
35 to 49	240	22	16
50 to 64	60	6	11
65 plus	<25	2	13

Published January 2015

Trauma and Injury Intelligence Group

Centre for Public Health, Faculty of Education, Health and Community, Liverpool John Moores University,
2nd Floor, Henry Cotton Building, Liverpool L3 2ET

T: 0151 231 4500 | E: tiig@ljmu.ac.uk | W: www.tiig.info and www.cph.org.uk | Twitter: www.twitter.com/tiig_cph